

Scan QR Code  
to Watch Videos



# SFX LASER

LASER CLEANER / LASER WELDER/ LASER ENGRAVER

[WWW.SFXLASER.COM](http://WWW.SFXLASER.COM)



***Quality Products Move The World***

# DIRECTORY

## COMPANY PROFILE

**01**

- Factory Facilities
- International Certification and Trademark
- Business Territory
- Global After-sales
- Professional Test

## PRODUCT CATALOG

**02**

- Laser Cleaner
- Laser Welder
- Galvo Laser Engraver
- Laser Engraver and Cutter

**03**

## INTO SFXLASER

- Modern Intelligent Workshop
- Company Culture

**04**

## REFERENCE TABLE

- CO<sub>2</sub> Laser Cutting



# COMPANY PROFILE

- Factory Facilities
- International Certification and Trademark
- Business Territory
- Global After-sales
- Professional Test



# FACTORY FACILITIES





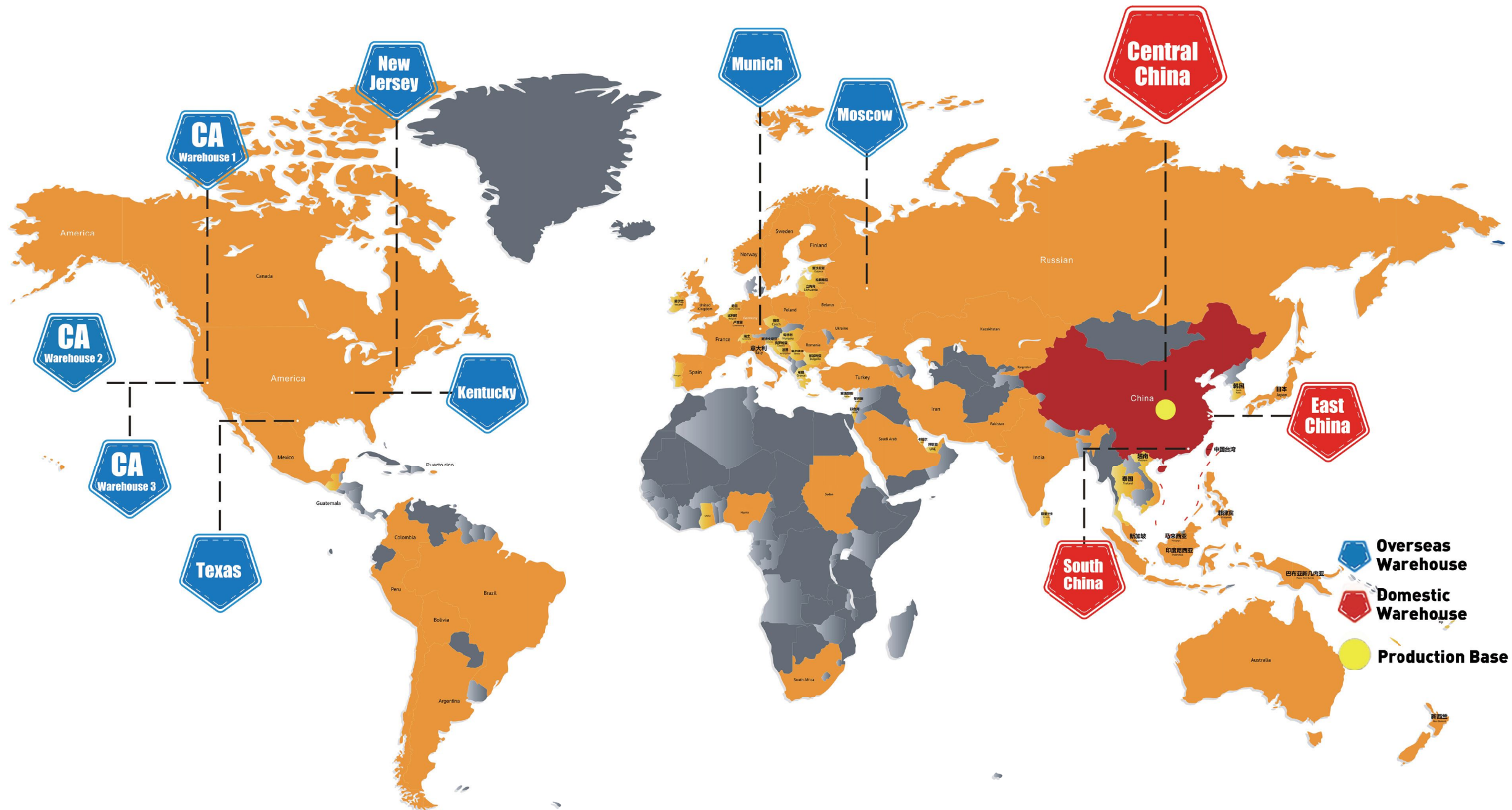
# INTERNATIONAL CERTIFICATION AND TRADEMARK

Products have passed multiple certifications in EU and US





# BUSINESS TERRITORY



2

European  
Warehouses  
Munich  
Moscow

3

Chinese  
Warehouses  
North, Central and  
South China

5

American  
Warehouses  
New Jersey,  
Kentucky, Texas,  
California 1, 2, 3

84

Countries  
and Regions  
Worldwide  
Sales

200+

Global  
Employees  
Talented  
Educated  
Dedicated

As our world has transformed to be internet and online focused, SFX has embraced distribution on platforms such as: Amazon, Ebay, Newegg and Walmart.

We currently export to 84 countries and regions to include: USA, Canada, Germany, S. Korea, India, UK and Italy.

# GLOBAL AFTER-SALES

## After-sales Center in North America

**12 Hours Quick Response**  
For USA technical or warranty support contact!

**Industrial Print & Laser**  
📍 247 Cayuga Rd. 25C Buffalo NY 14225  
☎ 716.400.8966  
✉ service@printandlaser.com



After-sales Center in North America  
📍 New York, USA



After-sales Center in Europe  
📍 Munich Germany

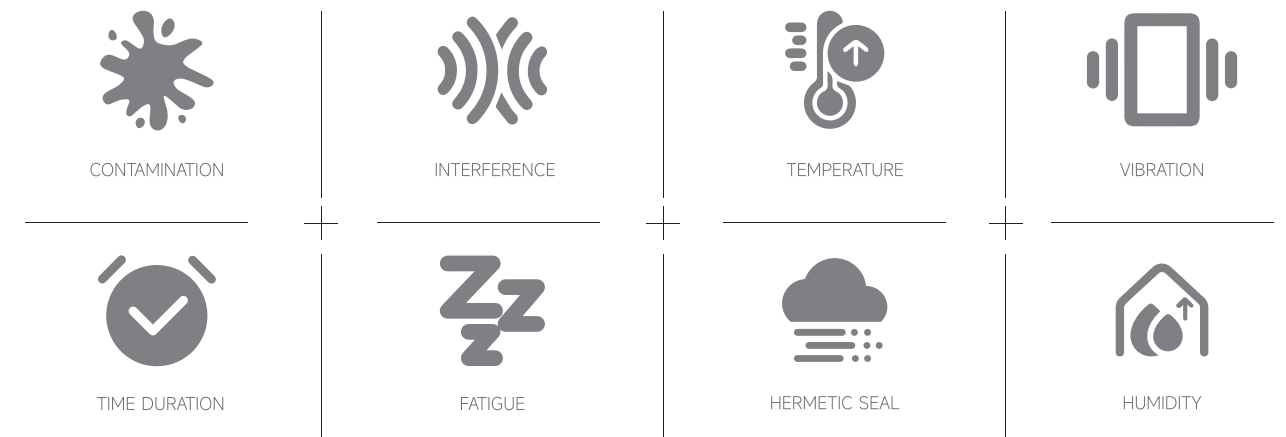


Greater China After-sales Center  
📍 Luoyang, China

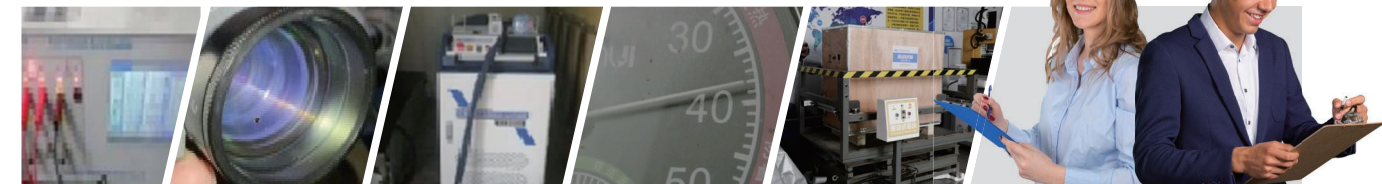


# ISO 9001-2015 COMPLIANCE

Testing according to ISO and best practices back our products.



\*Above is a partial sample of our extensive testing



# BRAND NAME COMPONENTS





# PRODUCT CATALOG

## LASER CLEANER

- Mobile
- Handheld
- Suitcase
- Backpack

## LASER WELDER

- Mobile
- Platform Automatic

## GALVO ENGRAVING LASERS

- CO2 / UV / FIBER

## ENGRAVING / CUTTING LASERS

- CO2 Engraving and Cutting
- Hybrid Engraving and Cutting
- Fiber Laser Cutting

Continuous working without burning the lens. Flexible and easy to carry

# MOBILE LASER CLEANER CONTINUOUS TYPE



INDUSTRIAL CABINET



LASER GUN



MOBILITY



SMALLER VOLUME

## Features

The ideal replacement for sandblasting, abrasives and grinding.  
Simple and quick complex surfaces with contoured complex surface geometry  
Eliminate cost of blasting media, and costly abrasives.  
Elimination of labor for component disassembly and re-assembly.  
Lasered surface is paint ready.

- Robust industrial design supporting continuous operation
- Working width of laser beam adjustable 0.4"-6.3" wide
- Ergonomic and mobile, easy to move
- Integrated programmable laser cooling and continuous air flow pump
- Continuous operation causes no damage to the focal lens

## Technical Parameters

Model	BLC-1000	BLC-1500	BLC-2000	BLC-3000
Laser Source Power	1000W	1500W	2000W	3000W
Wavelength	1080±10nm			
Operating Mode	Continuous/Modulation			
Max. Frequency	20KHz			
Integrated Cable Length	10-15m (customizable)			20m
Scan Width	10-160mm			
Voltage	AC 220V±10%			AC 380V±7%
Input Power	6kW	8kW	10kW	13kW
Cooling Method	Water cooling (deionized water, distilled water or purified water)			
Water Tank Capacity	16L (Add 14-15L water)			
Machine Dimension	845*460*605mm		905*480*630mm	1240*584*1148mm
Package Dimension	1120*565*1050mm			
Total Weight	138kg	145kg	169kg	285kg

\*Due to product updates, there may be differences in appearance and parameters, please refer to the latest product!

## Applicable Materials and Industries

Mold cleaning, paint or coating stripping , parts pretreatment before spraying, aerospace component cleaning, oxide removal after welding or pretreatment before welding, oil stain and product residue removal, cultural relic cleaning and restoration, etc.





Flexible and easy to carry

# SUITCASE LASER CLEANER PULSED TYPE



LCM-100

LCM-200



## Technical Parameters >>>

Model	LCM-100	LCM-200
Laser Power	100W	200W
Laser Wavelength	1080±10nm	
Laser Working Mode	Pulsed	
Pulse Width	10-500ns	
Frequency Range	1-3000kHz	
Fiber Cable Length	5m	
Adjustable Scanning Range	10-130mm (According to lens, 160/210/300 is optional)	
Cooling Method	Air Cooling	
Working Voltage	AC 110V/220V	AC 220V±10%
Power Consumption	<500W	<1000W
Anti-Reflection Protection	Yes	
Operation Temperature	0~35°C	
Operation Humidity	≤ 80%	
Machine Dimension	620*450*300mm	680*590*400mm
Net Weight	28kg	50kg

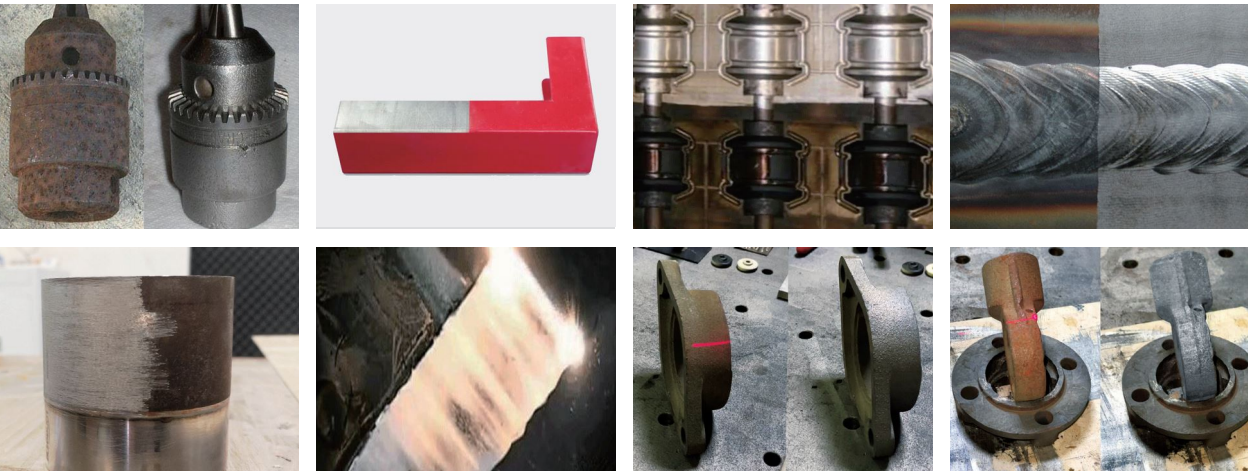
\*Due to product updates, there may be differences in appearance and parameters, please refer to the latest product!

## Application and Use >>>

The pulsed laser configuration is especially well suited for the use on more fragile surfaces such as thin sheet metal, aircraft aluminum and any metal surface that cannot tolerate high temperature.

**COMPATIBLE SURFACES:** Carbon and Stainless Steel, Aluminum, Assorted Metals and some Nonmetals.

**DEBRIS REMOVED:** Rust, Paint, Plating, Oil, and more.



## Features >>>

Suit Case design, unlock and extend the handle to roll away.

- A variety of laser patterns and tracks are optional. No dead angle for cleaning
- Laser beam collimated output, precise control, precise cleaning
- Standard wireless micro-controller, which can set parameters from a distance

Wide cleaning range, without damage to the substrate, suitable for fine cleaning

# HANDHELD LASER CLEANER

PULSED TYPE



## Features

- Accurate cleaning, without damage to the substrate, higher cleaning efficiency
- Support 8 cleaning modes, applicable to complex applications
- Extended IO can cooperate with manipulator to realize automatic cleaning

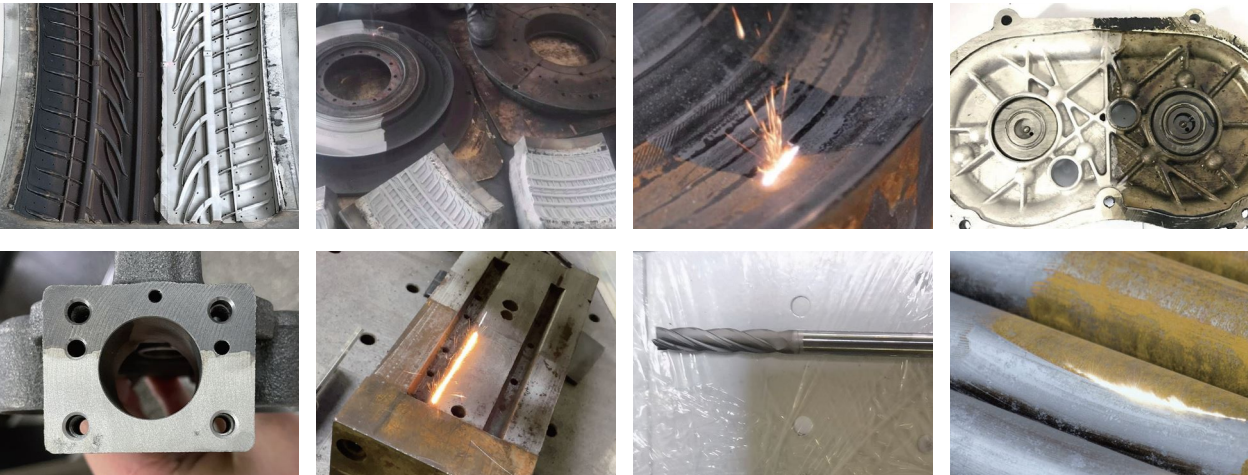
## Technical Parameters

Model	LCM-300	LCM-500
Laser Power	300W	500W
Laser Wavelength	1080±10nm	
Laser Working Mode	Pulsed	
Pulse Width	10-500ns	
Frequency Range	1-1000kHz	
Fiber Cable Length	10m	
Adjustable Scanning Range	10-130mm (According to lens, 160/210/300 is optional)	
Cooling Method	Air Cooling/Water Cooling	Water Cooling
Working Voltage	AC 220V±10%	
Power Consumption	<3KW	<4KW
Anti-Reflection Protection	Yes	
Operation Temperature	0~35℃	
Operation Humidity	≤ 80%	
Machine Dimension	870*560*1050mm	
Net Weight	160kg	170kg

\*Due to product updates, there may be differences in appearance and parameters, please refer to the latest product!

## Applicable Materials and Industries

Mold cleaning, paint or coating stripping , parts pretreatment before spraying, aerospace component cleaning, oxide removal after welding or pretreatment before welding, oil stain and product residue removal, cultural relic cleaning and restoration, etc.





Backpack design, ergonomic and reduces operating labor intensity

# BACKPACK LASER CLEANER

PULSED TYPE

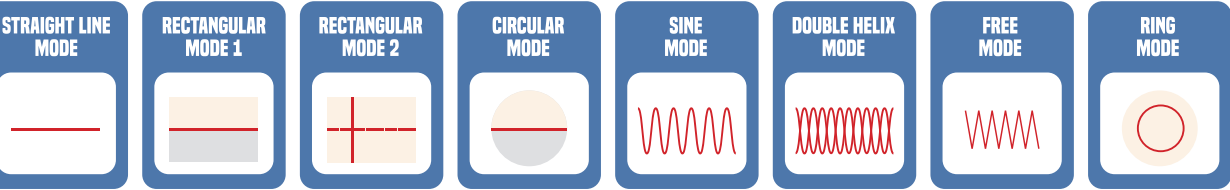


## Features

Total weight about 16kg Compact structure, easy to work.  
The cleaning head is only 750g Light to hold with fast cleaning  
Lithium battery design Wireless mobile cleaning operation

- Lightweight backpack design, easy to carry
- Non-contact cleaning without mechanical damage
- No chemical pollution, no consumables, safe and environment friendly
- Optional battery, convenient for outdoor work

## 8 Cleaning Modes



## Technical Parameters

Model	LC-100
Laser Power	100W
Laser Wavelength	1080±10nm
Laser Working Mode	Pulsed
Pulse Width	10-500ns
Frequency Range	1-3000kHz
Fiber Cable Length	1.5m
Adjustable Scanning Range	10-100mm(According to lens, 210mm/254mm/330mm is optional)
Cooling Method	Air Cooled
Working Voltage	The battery (optional) can support the machine to work continuously for 1 hour; the machine is equipped with 110/220V to 48V adapter as standard
Rated Power Consumption	<500W
Anti-reflection Protection	Yes
Working Temperature	0~35°C
Working Humidity	≤ 80%
Overall Size	336*129*540mm
Total Weight	16Kg (Battery Included)

\*Due to product updates, there may be differences in appearance and parameters, please refer to the latest product!

## Applicable Materials and Industries

Mold cleaning, paint or coating stripping , parts pretreatment before spraying, aerospace component cleaning, oxide removal after welding or pretreatment before welding, oil stain and product residue removal, cultural relic cleaning and restoration, etc.





One machine equals 2 welders. Flexible and easy to carry

# MOBILE LASER WELDER



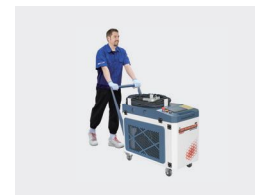
WIRE FEED



INDUSTRIAL CABINET



WELDING GUN



MOBILITY



SMALLER VOLUME

## Features

Fast operator training time yielding results of an experienced craftsman

Simple operation and low labor cost

Suitable for welding at any angle

- High welding efficiency, 3-8 times that of traditional welding machines
- No grinding or finishing required to the seam
- Synchronous wire feeding system, high welding strength, large aspect ratio and small deformation

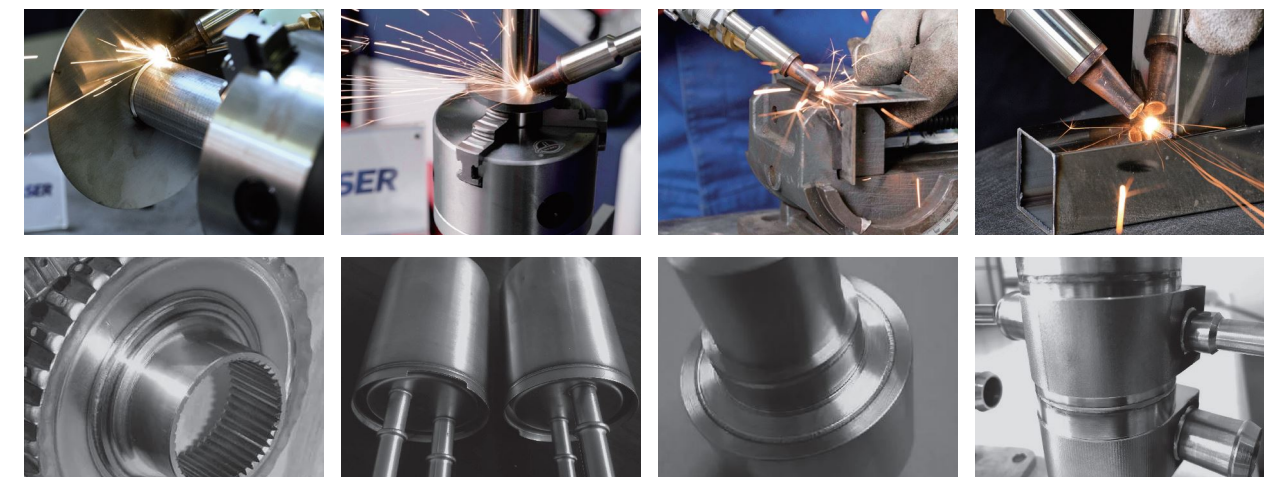
## Technical Parameters

Model	BLW-1000	BLW-1500	BLW-2000	BLW-3000
Laser Source Power	1000W	1500W	2000W	3000W
Wavelength	1080±10nm			
Operating Mode	Continuous/Modulation			
Max. Frequency	20KHz			
Scan Width	0-6mm			
Integrated Cable Length	10-15m (customizable)			20m
Voltage	AC220V±10%			AC 380V±7%
Input Power	6kW	8kW	10kW	14kW
Cooling Method	Water cooling (deionized water, distilled water or purified water)			
Water Tank Capacity	16L (Add 14-15L water)			
Machine Dimension	845*460*605mm		905*480*630mm	1240*584*1148mm
Package Dimension	1270*580*1070mm			1430*720*1220mm
Total Weight	155kg	160kg	185kg	277kg

\*Due to product updates, there may be differences in appearance and parameters, please refer to the latest product!

## Applicable Materials and Industries

Suitable for metal materials, such as carbon steel, stainless steel, titanium, aluminum, etc. Widely used in kitchen cabinets and bathrooms, stair lifts, shelves, advertisements, ovens, stainless steel door and window guardrails, distribution boxes, stainless steel furniture, etc.



High-precision 5-axis linkage

# PLATFORM AUTOMATIC LASER WELDING MACHINE



## Features

High-precision 5-axis linkage, can realize welding in complex scenes such as three-dimensional surface processing

- Zero basis teaching programming, simple operation, lower personnel requirements
- High welding efficiency, small deformation, beautiful weld seam and no need for additional treatment
- Full digital control, can realize stable welding with wire and without wire
- High-definition CCD monitors the position and status of welding, and the positioning is accurate
- The whole machine adopts modular design, stable performance and easy maintenance

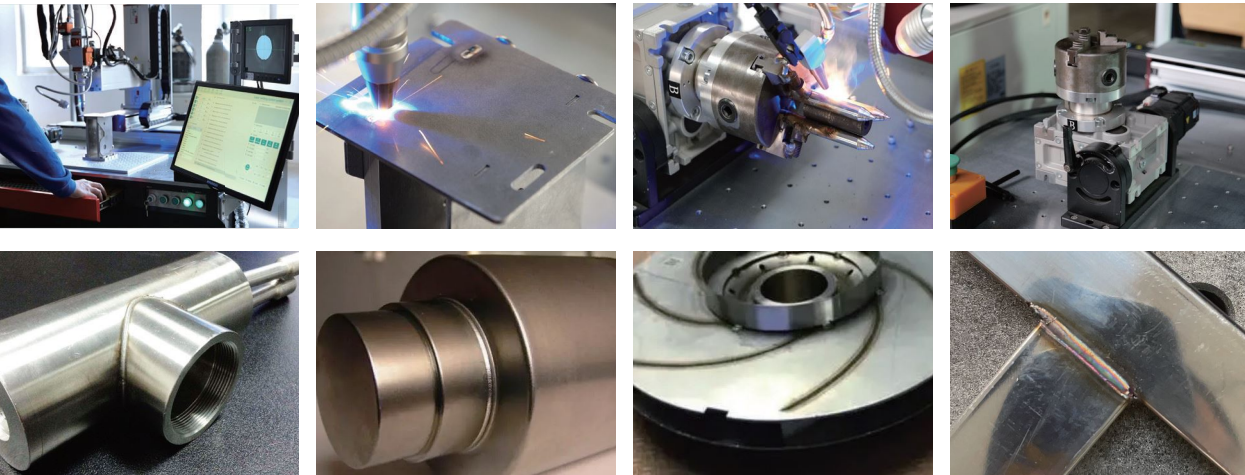
## Technical Parameters

Model	DLW-1000	DLW-1500	DLW-2000	DLW-3000
Laser Power	1000W	1500W	2000W	3000W
Laser Wavelength	1080±10nm			
Laser Working Mode	Continuous/Modulation			
Worktable Size	1200*1000mm(Can be customized)			
XYZ Stroke	800*300*300mm			
Spot Parameters	Ring (Other shapes are optional)/ 0-5mm			
Cooling Method	External Chiller (Medium deionized water, distilled water or purified water)			
Working Voltage	AC 220V±10%		AC 380V±7%	
Rated Power Consumption	<8KW	10KW	12KW	15.5KW
Overall Size	1200*1000*1700mm			
Net Weight	400kg (actual weight depending on configuration)			

\*Due to product updates, there may be differences in appearance and parameters, please refer to the latest product!

## Applicable Materials and Industries

Suitable for metal materials, such as carbon steel, stainless steel, titanium, aluminum, etc. Widely used in kitchen cabinets and bathrooms, stair lifts, shelves, advertisements, ovens, stainless steel door and window guardrails, distribution boxes, stainless steel furniture, etc.





Suitable for metal and some non-metallic materials

# FIBER LASER ENGRAVER



Handheld



Tabletop with Enclosure



Desktop

## Features

- Fast Marking Speed, exceptional stability and superior optical performance
- Maintenance free, Long Life, Low Investment
- Wide frequency range, high tolerance and superior initial pulse integrity
- High Rate of Electrical-Optical Conversion: 70%
- Compatible with multiple file formats: Coreldraw, AutoCAD, Photoshop; PLT, PCX, DXF, BMP, etc. Directly Use SHX, TTF Fonts
- Automatic Encoding, Printing Serial Number, Batch Number, Date, Barcode, QR Code, Sequential numbering

## Technical Parameters

Model	SFX-20GS/30GS/50GS/60GS/80GS/100GS
Laser Power	20W/30W/50W/60W/80W/100W
Output Power Range	10%-100%
Marking Speed	7000mm/s
Wavelength	1064nm
Marking Field	70×70mm/110×110mm/150×150mm/175×175mm/220×220mm/300×300mm
Laser Source	MAX/RAYCUS/JPT/IPG Optional
Engraving Depth	0.01-1mm
Repetition Precision	0.002mm
Min.Width	0.01mm
Input Voltage	110V/220V, 50/60Hz
Cooling Method	Air Cooling
Packing Size	785*485*810mm
G.W	62KG-78KG

\*Due to product updates, there may be differences in appearance and parameters, please refer to the latest product!

## Applicable Materials and Industries

Applicable Materials: Platinum, Tungsten, Titanium, Carbide Nickel, Carbon Steel, Aluminum, Stainless Steel, Brass, Copper, Gold, Silver, metals, etc. Also some of nonmetal such as nylon, light button, ABS, PVC, PES, etc.



## Optional Accessories&Function



Rotary Axis

XY Table

Motorized Z-axis

Auto-focus Galvanometer

2.5D/3D Carving

Suitable for non-metallic materials

# CO<sub>2</sub> GALVO LASER ENGRAVER



Desktop



Enclosure



RF Laser Module

## Features

- Versatile power range and frequency control (CW or PWM)
- Fast Marking Speed, exceptional stability and superior optical performance
- Maintenance free, Long Life, Economical
- Compatible with multiple file formats: Coreldraw, AutoCAD, Photoshop; PLT, PCX, DXF, BMP, etc. Directly Use SHX, TTF Fonts
- Automatic Encoding, Printing Serial Number, Batch Number, Date, Barcode, QR Code, Sequential numbering

## Technical Parameters

Model	SFX-20CS/30CS/55CS/70CS
Laser Power	20W/30W/55W/70W
Output Power Range	10%-100%
Marking Speed	7000mm/s
Wavelength	10.64μm
Marking Field	70×70mm/110×110mm/140×140mm/175×175mm/210×210mm/300×300mm
Laser Source	DAVI/COHERENT Optional
Engraving Depth	0.01-2mm(Depends on Materials)
Repetition Rate	0.002mm
Min.Width	0.01mm
Input Voltage	110V/220V, 50/60Hz
Cooling Method	Air Cooling/Water Cooling
Packing Size	935*485*810mm
G.W	73.5KG-75KG

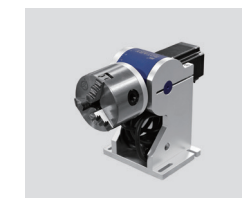
\*Due to product updates, there may be differences in appearance and parameters, please refer to the latest product!

## Applicable Materials and Industries

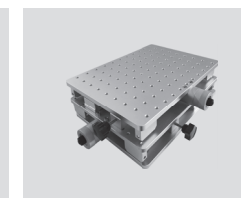
Applicable Materials: Wood, Glass, Acrylic, Paper, Rubber and other non-metallic materials like Food, Medicine, Wine, Electronic Components, IC, Electrical Appliances, Mobile Phone Communications, Building Materials, PVC Pipe and other Industries.



## Optional Accessories&Function



Rotary Axis



XY Table



Motorized Z-axis



Auto-focus Galvanometer



3D Carving



Cold laser processing, ultra-fine marking, wider range of application

# UV LASER ENGRAVER



## Features

- Micro-fine dot, narrow pulse and less heat result in results in sharpest detail in the smallest engravings.
- The UV wavelength (355nm) enables high-contrast, damage-free “cold marking” , minimizing heat effects, burrs and yellow tinting to achieve perfect part finishes.
- The optical path and circuitry are integrated resulting in minimal external interference
- Compatible with multiple file formats: Coreldraw, AutoCAD, Photoshop; PLT, PCX, DXF, BMP, etc. Directly Use SHX, TTF Fonts
- Automatic Encoding, Printing Serial Number, Batch Number, Date, Barcode, QR Code, Sequential numbering

## Technical Parameters

Model	SFX-3UV/5UV/10UV/15UV
Laser Power	3W/5W/10W/15W
Output Power Range	10%-100%
Marking Speed	7000mm/s
Wavelength	355nm
Marking Field	70×70mm/110×110mm/140×140mm/175×175mm/250×250mm/300×300mm
Laser Source	JPT
Engraving Depth	0.01-0.5mm(Depends on Materials)
Repetition Accuracy	0.001mm
Min.Width	0.01mm
Input Voltage	110V/220V, 50/60Hz
Cooling Method	Air Cooling/Water Cooling
Packing Size	935*485*810mm
G.W	60KG-68KG

\*Due to product updates, there may be differences in appearance and parameters, please refer to the latest product!

## Applicable Materials and Industries

Industries to include but limited to: Cosmetics, Pharmaceuticals, Automotive, Electronics, Appliances, Communications.  
Materials to include: Flexible PCB, LCD Glass, Anodize, Plastics of all types, a wide spectrum of glass and much more.



## Optional Accessories&Function



Rotary Axis

XY Table

Motorized Z-axis

Auto-focus Galvanometer

3D Carving



7 inch touch screen, electromagnet base

# PNEUMATIC MARKER



## Features

- Split design, easy to carry. PC is not needed, 7 inch touch screen built-in control system.
- Electromagnet Base. No Need to Hold by Hand, The Head Comes With an Electromagnet Base, Can be Firmly
- Attached to the Surface of the Magnetic Workpiece.
- Marking contents: English letters, fixed characters, serial number, VIN, date, graphics, logo etc.
- Hard alloy marking pin can mark materials within HRC60 of metal and plastic.

## Technical Parameters

Model	Z-MARKING-01	Z-MARKING-02
Marking Depth	0.02-1mm	0.02-1mm
Marking Speed	3-5 Characters Per Second	3-5 Characters Per Second
Material Hardness	≤ HRC60	≤ HRC60
Marking Range	80*40mm	120*50mm
Compressed Air	0.4-0.6MPA	0.4-0.6MPA
Power Supply	110V/220V 50/60Hz	110V/220V 50/60Hz
Air Consumption	3 L/S	3 L/S
Power Consumption	300W	300W
Weight	10kg	11kg

\*Due to product updates, there may be differences in appearance and parameters, please refer to the latest product!

## Applicable Materials and Industries

Applicable Materials: English letters, fixed characters, serial number, VIN, date, graphics, logo etc.





Suitable for gifts, cloth toys, handicrafts, advertising decoration, packaging and printing, etc.

## CO<sub>2</sub> LASER ENGRAVER & CUTTER



SFX-4040



SFX-4060

### Features >>>

- Reci brand CO2 glass tube
- Brand name stepper motors support accurate, high speed head positioning
- Reliable, accurate stainless steel linear guides for high tolerance output
- Red Pointer light continuously indicates laser beam position on work piece
- Honeycomb Matrix work bed insert minimizes hot spots on work piece
- Work bed up and down via electric motor
- Continuous air flow through beam nozzle insures debris free lenses
- Laser tube cooling supported by industry leading water chiller

### Optional Accessories >>>



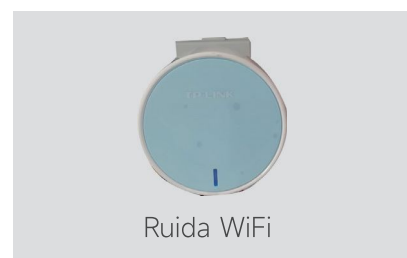
Indoor Air Filter



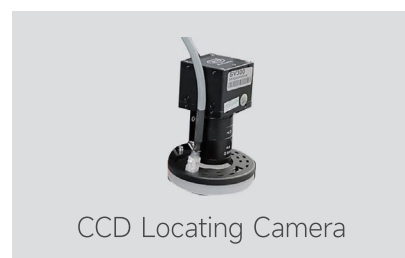
Drinkware Fixture



Cylindrical Fixture



Ruida WiFi



CCD Locating Camera



Lightburn Software

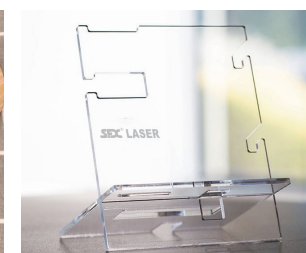
### Technical Parameters >>>

Model	SFX-4040/4060
Working Area	400*400mm/400*600mm
Laser Type	Sealed CO <sub>2</sub> laser tube
Laser Power	50W/60W
Cooling System	Water cycle cooling
Optional Power	0-100% set by software
Operate System	High speed DSP control, step motor
Minimum Shaping Character	English Letters:1mm
Working Voltage	110V, 60Hz / 220V, 50Hz
Working Environment	Temperature: 0-45° C, Humidity: 5%-95%
File Format	*.plt, *.dst, *.dxf, *.bmp, *.dwg, *.ai, *.las, support AutoCAD, CoreDraw output directly
Transmission Type	Belt / XY modular design

\*Due to product updates, there may be differences in appearance and parameters, please refer to the latest product!

### Applicable Materials and Industries >>>

Applicable to nonmetallic materials, such as acrylic, plexiglass, wood, MDF, rubber, PVC, leather, paper, stone, glass, cloth, plastic, etc.



Suitable for engraving/cutting of acrylic, cloth, leather and other non-metallic materials etc.

## CO<sub>2</sub> LASER ENGRAVER & CUTTER



SFX-1390

### Features >>>

- Reci & Yongli laser source
- Auto-focus
- Motorized  $\updownarrow$  work table
- Red light laser location indicator
- Ruida controller
- Integrated air flow to laser nozzle
- S&A laser tube chiller
- Large and small item work table included



### Optional Accessories >>>



Indoor Air Filter



Drinkware Fixture



Cylindrical Fixture



Ruida WiFi



CCD Locating Camera



Lightburn Software

### Technical Parameters >>>

Model	SFX-9060/1290/1390/1490/1610/1325/1530
Working Area	900*600mm/1200*900mm/1300*900mm/1400*900mm/1600*1000mm/1300*2500mm/1500*3000mm
Laser Type	Sealed CO <sub>2</sub> laser tube
Laser Power	80W/100W/130W/150W/180W/220W/300W
Cooling System	Water cycle cooling
Optional Power	0-100% set by software
Operate System	High speed DSP control, step motor
Minimum Shaping Character	English Letters:1mm
Working Voltage	110V, 60Hz / 220V, 50Hz
Working Environment	Temperature: 0-45° C, Humidity: 5%-95%
File Format	*.plt, *.dst, *.dxf, *.bmp, *.dwg, *.ai, *.las, support AutoCAD, CoreDraw output directly
Transmission Type	Belt / XY modular design

\*Due to product updates, there may be differences in appearance and parameters, please refer to the latest product!

### Applicable Materials and Industries >>>

Applicable to nonmetallic materials, such as acrylic, plexiglass, wood, MDF, rubber, PVC, leather, paper, stone, glass, cloth, plastic, etc.





Suitable for engraving/cutting thin metal sheets and non-metallic materials

# HYBRID CO<sub>2</sub> LASER CUTTER



SFX-1390

## Features ▶▶

- Reci & Yongli laser source
- Auto-focus
- Motorized ↑↓ work table
- Red light laser location indicator
- Ruida controller
- Integrated air flow to laser nozzle
- S&A laser tube chiller



SFX-1325

## Optional Accessories ▶▶



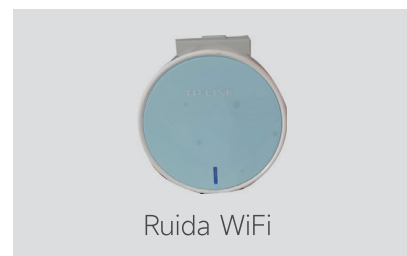
Indoor Air Filter



Drinkware Fixture



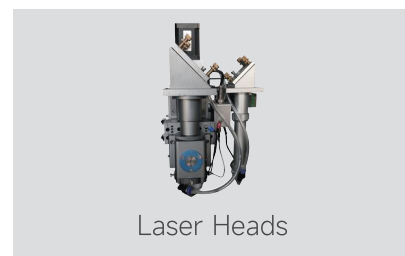
Cylindrical Fixture



Ruida WiFi



CCD Locating Camera



Laser Heads

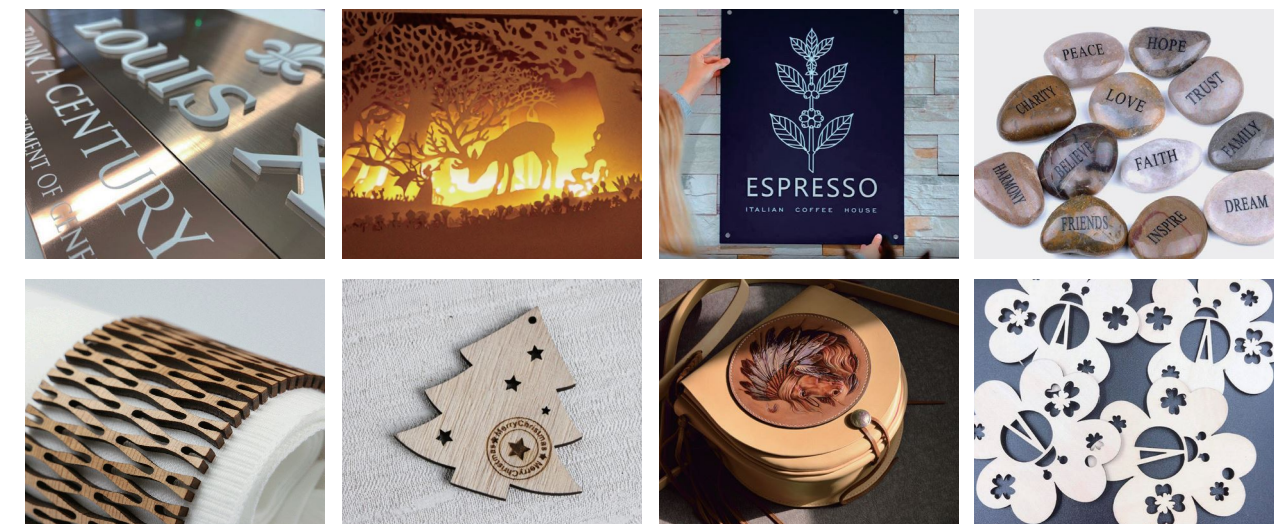
## Technical Parameters ▶▶

Model	SFX-1390/1325
Working Area	1300*900mm/1300*2500mm
Laser Type	Sealed CO <sub>2</sub> glass laser tube, wavelength: 10.64μm
Laser Power	150W/180W/220W/280W/300W
Cooling Mode	Pure circulating water cooling
Control System	DSP offline control system, laser power software 0-100% adjustable
Maximum Engraving Speed	0-60000mm/min
Maximum Cutting Speed	0-30000mm/min
Repetition Accuracy	≤ ±0.01mm
Min. Letter	English: 1.0*1.0mm
Working Voltage	110V/220V, 50Hz~60Hz
Working Condition	Temperature: 0-45° C, Humidity: 5%-95%
File Format	*.plt, *.dst, *.dxf, *.bmp, *.dwg, *.ai, *.las, support AutoCAD, CoreDraw output directly

\*Due to product updates, there may be differences in appearance and parameters, please refer to the latest product!

## Applicable Materials and Industries ▶▶

Applicable to stainless steel, carbon steel, galvanized steel, acrylic, polywood, MDF, plexiglass, wood, rubber, PVC, leather, paper, stone, glass, etc.





Suitable for precision cutting of metal plates such as gold and silver in jewelry

## PRECISION FIBER LASER CUTTER



### Features

- Fast and precise cutting while maintaining the highest tolerances possible
- IPG and Raycus laser supported by industry leading 2 year warranty
- User friendly CypOne/CypCut software supports all common vector fomrats including DXF, PLT, AI, LXD and more.
- Industry Leading Raytools Cutting Head featuring Auto-Focus
- Machine enclosure windows feature 1064nm safety glass to protect from laser scatter
- Hanli and S & A chillers support reliable laser source Cooling

### Fiber laser source cutting capacity

Material	Maximum cutting thickness (mm)			Remark
	1000w	1500w	2000w	
Stainless steel	4	5	8	To insure the desired results it is best to choose the next higher power rating to meet the maximum desired thickness.
Carbon steel	10	14	18	
Galvanized sheet	4	5	8	
Aluminum	3	4	5	
Brass	3	4	5	

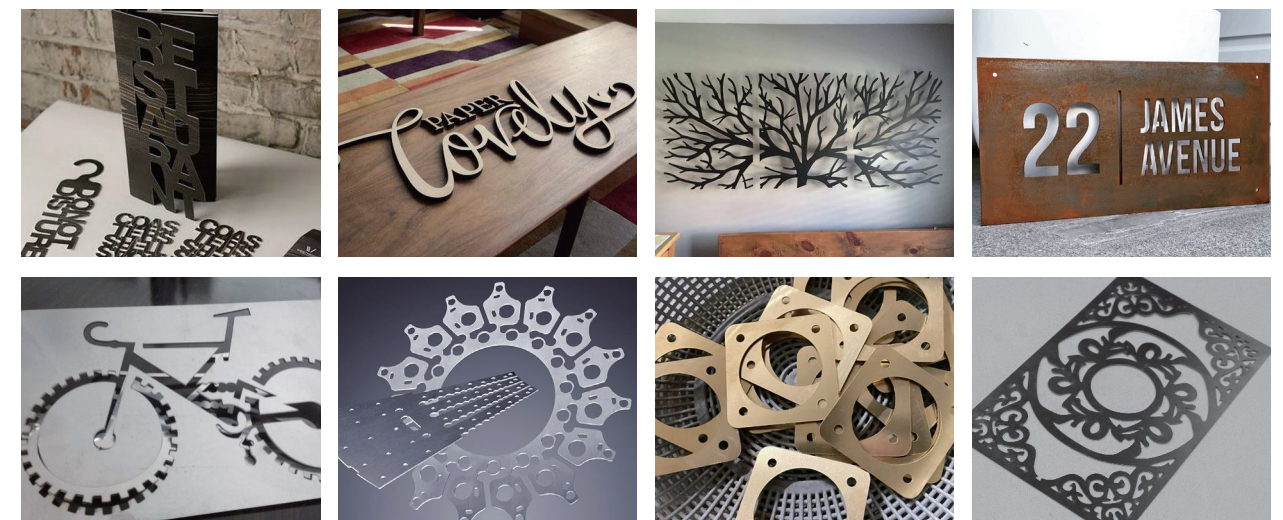
### Technical Parameters

Model	SFX-3030	SFX-6080
Working Area	300*300mm	600*800mm
Fiber Laser Power	1000W-3000W	1000W/1500W/2000W... .6000W
Laser Wavelength	1064nm	1064nm
Beam Quality	<0.373mrad	<0.373mrad
Max Cutting Accuracy	+0.03mm	+0.05mm
Re-position Accuracy	+0.01mm	+0.03mm
Max Operating Speed	30m/min	30m/min
Max Cutting Speed	30m/min	30m/min
Transmission Type	Precision dual ball screw transmission	Precision dual ball screw transmission
Driving System	Servo motors	Servo motors
Cutting Depth	Depends on Laser Power and Materials	Depends on Laser Power and Materials
Assist Gas	Compressed air, Oxygen, Nitrogen	Compressed air, Oxygen, Nitrogen
Cooling Method	Industrial circulation water chiller	Industrial circulation water chiller
Aiming and positioning	Red Dot	Red Dot
Working Voltage	220V/380V 50/60Hz (Transformer Available)	110V/240V 50-60Hz
Machine Dimensions/N.W	890*850*1830mm / 600kg	1800*1720*1820mm / 1500kg
Packing Dimensions/G.W	1550*1540*1950mm / 850kg	2500*1900*2090mm / 1700kg

\*Due to product updates, there may be differences in appearance and parameters, please refer to the latest product!

### Applicable Materials and Industries

Applicable to sheet metal such as carbon/mild steel, stainless steel, aluminum alloy, galvanized sheet, electrolytic plate, silicon steel, titanium alloy, aluminum zinc plate, brass, copper, silver and tight sheet metal fittings, etc.





Suitable for fast batch cutting of metal sheet

## FIBER LASER CUTTER



SFX-9013

### Features

- Fast and precise cutting while maintaining the highest tolerances possible
- IPG and Raycus laser supported by industry leading 2 year warranty
- User friendly CypOne/CypCut software supports all common vector fomrats including DXF, PLT, AI, LXD and more.
- Industry Leading Raytools Cutting Head featuring Auto-Focus
- Hanli and S & A chillers support reliable laser source Cooling

### Fiber laser source cutting capacity

Material	Maximum cutting thickness (mm)			Remark
	1000w	1500w	2000w	
Stainless steel	4	5	8	To insure the desired results it is best to choose the next higher power rating to meet the maximum desired thickness.
Carbon steel	10	14	18	
Galvanized sheet	4	5	8	
Aluminum	3	4	5	
Brass	3	4	5	

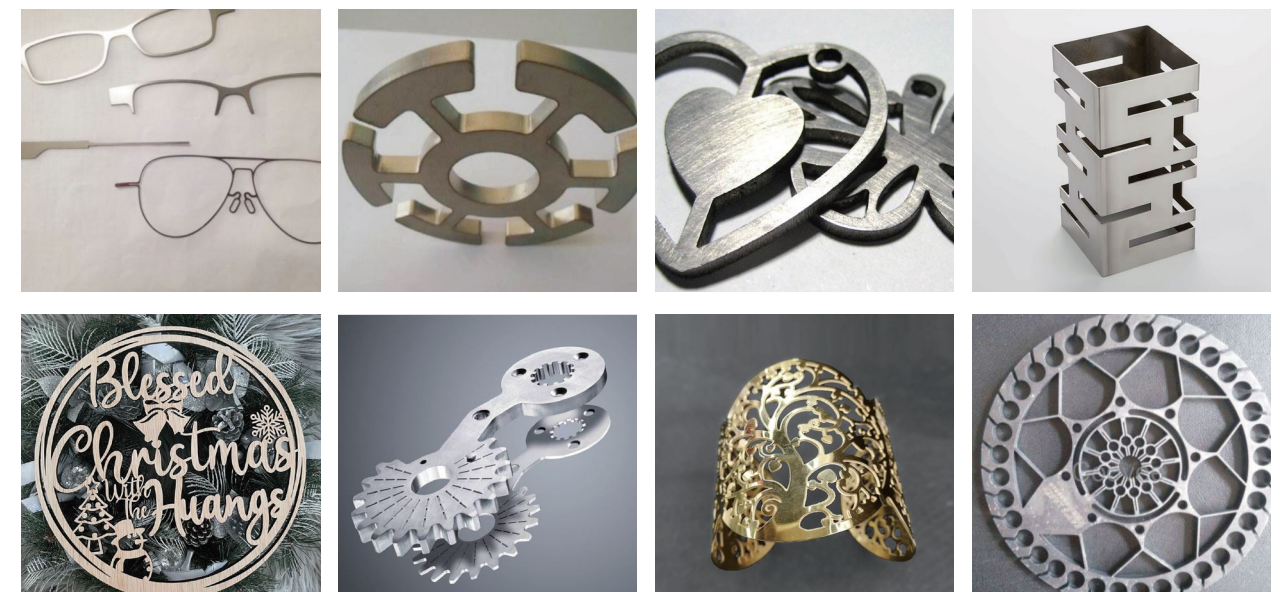
### Technical Parameters

Model	SFX-9013
Working Area	900*1300mm/1300*1300mm/1300*2500mm/1500*3000mm/1500*6000mm 2000*4000mm/2000*6000mm.....
Fiber Laser Power	1000W/1500W/2000W/....6000W
Laser Wavelength	1064nm
Beam Quality	< 0.373mrad
Max Cutting Speed	30m/min(Depends on material)
Cutting Depth	Depends on Laser Power and Materials
Assist Gas	Compressed air, Oxygen, Nitrogen
Cooling Method	Industrial circulation water chiller
Working Voltage	110V/240V/380V 50-60Hz

\*Due to product updates, there may be differences in appearance and parameters, please refer to the latest product!

### Applicable Materials and Industries

Applicable to sheet metal such as carbon/mild steel, stainless steel, aluminum alloy, galvanized sheet, electrolytic plate, silicon steel, titanium alloy, aluminum zinc plate, brass, copper, silver and tight sheet metal fittings, etc.





Specilized in cleaning racks of laser cutting machines

# LASER SLAT CLEANER



## Features

- Fast slag removal speed, can reduce workload by 40%
- No consumables, special tooling with a long service life
- User can master the operation skills in 2 minutes, and the work can be completed by one person under a single station
- Two-stage buffer resistance technology, fast machine response

## Technical Parameters

Model	JS-1000	JS-2300
Voltage	220v	
Frequency	50Hz	
Rated Power Consumption	1020w	2300w
Max. Laser Power	6000w	15000w
Suitable Thickness	3-8mm	
Minimum Spacing	30mm	
Weight	32kg	42kg
Package Dimension	81*32*38cm	81*36*38cm

\*Due to product updates, there may be differences in appearance and parameters, please refer to the latest product!

## Applicable Materials and Industries

It is suitable for CNC oxy-fuel cutting machines, CNC laser cutting machines, plasma and other cutting equipment slag cleaning of the gate-type worktable. It is widely used in sheet metal processing, shipbuilding, laser processing, mechanical manufacturing and other industries involving laser cutting.





# INTO SFX LASER

- Modern Intelligent Workshop
- Company Culture



## MODERN INTELLIGENT WORKSHOP





## MODERN OFFICES



Modern Exhibition Hall  
Beautiful Environment



## MASS PRODUCTION



## Mass Production Quality Control





Material	Material Thickness	40W		60W		80W		100W		130W		150W		180W		200W		300w		Note(Laser power 90%)
		Max. Speed	Best Speed	Max. Speed	Best Speed	Max. Speed	Best Speed	Max. Speed	Best Speed	Max. Speed	Best Speed	Max. Speed	Best Speed	Max. Speed	Best Speed	Max. Speed	Best Speed	Max. Speed	Best Speed	
Acrylic	3mm	15mm/s	10mm/s	20mm/s	15mm/s	25mm/s	20mm/s	30mm/s	25mm/s	35mm/s	30mm/s	40mm/s	35mm/s	45mm/s	40mm/s	55mm/s	45mm/s	55mm/s	45mm/s	Pay attention to airflow control when cutting acrylic. The amount of air blowing on the surface of the material should be smaller or side blowing, so as to ensure the smoothness of the acrylic; the bottom of the material should have air flow to prevent fire.
	5mm	8mm/s	5mm/s	10mm/s	7mm/s	12mm/s	8mm/s	15mm/s	10mm/s	17mm/s	12mm/s	21mm/s	15mm/s	25mm/s	18mm/s	30mm/s	25mm/s	30mm/s	25mm/s	
	8mm	4mm/s	2mm/s	5mm/s	3mm/s	9mm/s	5mm/s	10mm/s	6mm/s	12mm/s	8mm/s	15mm/s	10mm/s	18mm/s	12mm/s	25mm/s	15mm/s	25mm/s	15mm/s	
	1cm	3mm/s	—	4mm/s	2mm/s	6mm/s	3mm/s	7mm/s	4mm/s	8mm/s	5mm/s	11mm/s	7mm/s	16mm/s	10mm/s	20mm/s	13mm/s	20mm/s	13mm/s	
	15mm	—	—	2mm/s	0.8mm/s	3mm/s	1.5mm/s	4mm/s	2mm/s	5mm/s	3mm/s	7mm/s	4mm/s	9mm/s	6mm/s	11mm/s	8mm/s	11mm/s	8mm/s	
	20mm	—	—	1mm/s	0.3mm/s	1.5mm/s	0.5mm/s	2mm/s	0.7mm/s	3mm/s	1mm/s	4mm/s	1.5mm/s	5mm/s	2mm/s	7mm/s	4mm/s	7mm/s	4mm/s	
	25mm	—	—	—	—	0.5mm/s	0.2mm.s	0.8mm/s	0.3mm/s	1mm/s	0.4mm/s	1.8mm/s	0.8mm/s	2.5mm/s	1.2mm/s	5mm/s	3mm/s	5mm/s	3mm/s	
	30mm	—	—	—	—	—	—	0.3mm/s	—	0.5mm/s	0.3mm/s	0.8mm/s	0.5mm/s	1.3mm/s	0.8mm/s	3mm/s	1.5mm/s	3mm/s	1.5mm/s	
	35mm	—	—	—	—	—	—	—	—	0.2mm/s	—	0.4mm/s	0.1mm/s	0.6mm/s	0.3mm/s	1mm/s	0.7mm/s	1mm/s	0.7mm/s	
	40mm	—	—	—	—	—	—	—	—	—	—	0.1mm/s	—	0.2mm/s	0.1mm/s	0.5mm/s	0.3mm/s	0.5mm/s	0.3mm/s	
Die Cutting Plate	15mm	—	—	—	—	—	—	—	—	4mm/s	3mm/s	6mm/s	4.5mm/s	8mm/s	6mm/s	11mm/s	9mm/s	11mm/s	9mm/s	Pay attention to focal length and airflow control. The larger the air flow, the faster the cutting speed, and the smaller the air outlet, the greater the force acting on the unit area of the material; the focusing lens is recommended to use a focal length above 100mm
	18mm	—	—	—	—	—	—	—	—	2mm/s	1.2mm/s	4mm/s	2.5mm/s	5mm/s	3.5mm/s	8mm/s	6mm/s	8mm/s	6mm/s	
	20mm	—	—	—	—	—	—	—	—	—	—	2.5mm/s	1.8mm/s	3.5mm/s	2.5mm/s	6mm/s	4.5mm/s	6mm/s	4.5mm/s	
MDF (high-density board)	3mm	9mm/s	7mm/s	15mm/s	12mm/s	20mm/s	15mm/s	23mm/s	18mm/s	25mm/s	20mm/s	30mm/s	25mm/s	33mm/s	28mm/s	40mm/s	35mm/s	40mm/s	35mm/s	Pay attention to airflow control. The greater the airflow, the faster the cutting speed.
	5mm	5mm/s	3.5mm/s	10mm/s	8mm/s	13mm/s	10mm/s	15mm/s	13mm/s	18mm/s	15mm/s	21mm/s	18mm/s	25mm/s	21mm/s	30mm/s	25mm/s	30mm/s	25mm/s	
	10mm	—	—	3mm/s	—	5mm/s	3.5mm/s	7mm/s	5mm/s	9mm/s	6.5mm.s	12mm/s	9mm/s	14mm/s	11mm/s	18mm/s	15mm/s	18mm/s	15mm/s	
	15mm	—	—	—	—	—	—	2.5mm/s	—	4mm/s	3mm/s	7mm/s	5.5mm/s	9mm/s	7mm/s	12mm/s	10mm/s	12mm/s	10mm/s	
	18mm	—	—	—	—	—	—	—	—	—	—	4mm/s	—	5mm/s	4mm/s	8mm/s	7mm/s	8mm/s	7mm/s	
Leather	Single layer	15mm/s	12mm/s	20mm/s	17mm/s	25mm/s	20mm/s	30mm/s	25mm/s	40mm/s	35mm/s	45mm/s	40mm/s	50mm/s	45mm/s	60mm/s	55mm/s	60mm/s	55mm/s	For leather cutting, it is recommended to use a focusing lens with a focal length of 50 to cooperate with a laser tube of 60W-100W and a small air compressor.
Wooden boards (except rare hard wood)	3mm	10mm/s	8mm/s	15mm/s	12mm/s	20mm/s	18mm/s	25mm/s	22mm/s	30mm/s	28mm/s	35mm/s	33mm/s	40mm/s	37mm/s	50mm/s	48mm/s	50mm/s	48mm/s	When cutting wood, please pay attention to air flow control. The greater the air flow, the faster the cutting speed.
	5mm	5mm/s		10mm/s	8mm/s	15mm/s	10mm/s	20mm/s	18mm/s	25mm/s	22mm/s	30mm/s	28mm/s	35mm/s	32mm/s	45mm/s	42mm/s	45mm/s	42mm/s	
	10mm			4mm/s		8mm/s	6mm/s	12mm/s	10mm/s	15mm/s	13mm/s	20mm/s	17mm/s	25mm/s	20mm/s	35mm/s	30mm/s	35mm/s	30mm/s	
	15mm							8mm/s	5mm/s	11mm/s	8mm/s	15mm/s	13mm/s	18mm/s	15mm/s	25mm/s	22mm/s	25mm/s	22mm/s	
Fabric	Single layer	40mm/s	38mm/s	60mm/s	58mm/s	100mm/s	98mm/s	200mm/s	195mm/s	300mm/s	295mm/s	400mm/s	395mm/s	500mm/s	495mm/s	600mm/s	590mm/s	600mm/s	590mm/s	Same as leather cutting
PVC	2mm	35mm/s	32mm/s	50mm/s	45mm/s	60mm/s	58mm/s	70mm/s	68mm/s	80mm/s	78mm/s	90mm/s	88mm/s	100mm/s	98mm/s	120mm/s	118mm/s	120mm/s	118mm/s	For PVC cutting, it is recommended to use a focusing lens with a focal length of 50 and a laser tube of 60W-100W, and the power should be 50%-70%
	3mm	30mm/s	27mm/s	40mm/s	38mm/s	50mm/s	48mm/s	60mm/s	58mm/s	70mm/s	68mm/s	80mm/s	78mm/s	90mm/s	88mm/s	110mm/s	108mm/s	110mm/s	108mm/s	
	4mm	25mm/s	20mm/s	35mm/s	30mm/s	45mm/s	40mm/s	55mm/s	50mm/s	65mm/s	63mm/s	75mm/s	73mm/s	85mm/s	80mm/s	100mm/s	98mm/s	100mm/s	98mm/s	
Iron plate	2mm	—	—	—	—	—	—	—	—	—	—	8mm/s	6mm/s	15mm/s	12mm/s	40mm/s	30mm/s	40mm/s	30mm/s	Iron plate cutting requires oxygen assistance, and the oxygen pressure is 0.8mpa
	3mm	—	—	—	—	—	—	—	—	—	—	—	—	7mm/s	—	25mm/s	18mm/s	25mm/s	18mm/s	
Stainless Steel	0.5											50mm/s	40mm/s	55mm/s	45mm/s	70mm/s	60mm/s	90mm/s	80mm/s	Requires oxygen assistance
	1											25mm/s	20mm/s	30mm/s	25mm/s	40mm/s	35mm/s	50mm/s	40mm/s	
	1.5											10mm/s	8mm/s	18mm/s	15mm/s	25mm/s	20mm/s	35mm/s	30mm/s	
	2													10mm/s	8mm/s	20mm/s	15mm/s	25mm/s	20mm/s	
	2.5															15mm/s	10mm/s	20mm/s	15mm/s	
	3															10mm/s	7mm/s	15mm/s	10mm/s	
Two-color board	2mm	15mm/s	13mm/s	25mm/s	20mm/s	35mm/s	30mm/s	40mm/s	35mm/s	45mm/s	40mm/s	55mm/s	50mm/s	65mm/s	60mm/s	80mm/s	75mm/s	80mm/s	75mm/s	Same as PVC cutting
Paper	Single layer	80mm/s	40mm/s	120mm/s	40mm/s	150mm/s	40mm/s	250mm/s	40mm/s	350mm/s	40mm/s	450mm/s	40mm/s	550mm/s	40mm/s	650mm/s	40mm/s	650mm/s	40mm/s	Pay attention to the laser power adjustment when cutting paper. The higher the laser tube power, the smaller the laser adjustment percentage.
Rubber board	4mm (1mm)	15mm/s	13mm/s	25mm/s	20mm/s	30mm/s	27mm/s	35mm/s	33mm/s	40mm/s	38mm/s	45mm/s	43mm/s	50mm/s	48mm/s	60mm/s	58mm/s	60mm/s	58mm/s	The rubber sheet is generally cut in a single layer, and the surface layer can be cut through. The table belongs to the surface layer cutting parameters
	6mm (2mm)	10mm/s	8mm/s	15mm/s	10mm/s	18mm/s	15mm/s	20mm/s	18mm/s	25mm/s	23mm/s	30mm/s	28mm/s	35mm/s	33mm/s	45mm/s	43mm/s	45mm/s	43mm/s	





# SFX LASER

QUALITY PRODUCTS MOVE THE WORLD

**Luoyang Xincheng Precision Machinery Co., Ltd.**

Add : NO.256 Tanggong Road, Luoyang, Henan, China

Tel: +1 (240) 560-8967

E-mail: [info@sfxlaser.com](mailto:info@sfxlaser.com)

Web: [www.sfxlaser.com](http://www.sfxlaser.com)

